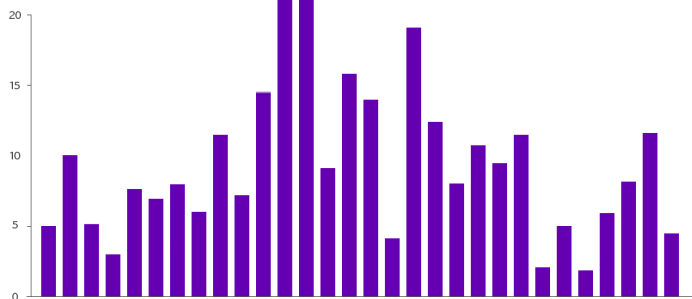


App Development 1

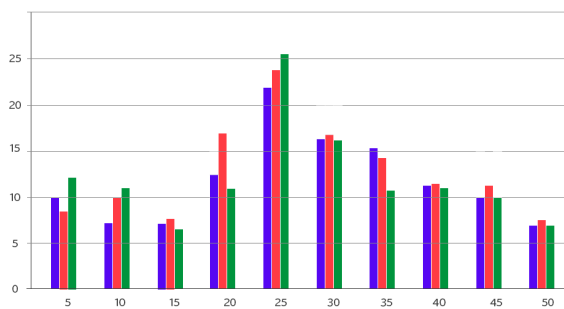
Data Visualization Examples

Bar Chart



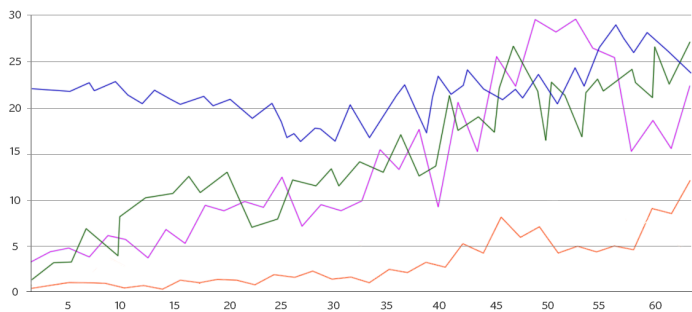
The **Bar Chart** is also known as a *Bar Graph* or *Column Graph*. It uses either horizontal or vertical bars to show a comparison of numbers across categories. For example, you could compare the number of women elected across a number of years.

Multi-Set Bar Chart



The **Multi-Set Bar Chart** is also known as a *Grouped Bar Chart* or *Clustered Bar Chart*. This variation of a Bar Chart is used when two or more data series are plotted side-by-side. For example, you could plot the total number women elected, the number of Democrats and the number of Republicans for each congressional session.

Line Graph



The **Line Graph** is most frequently used to show trends and analyse how the data has changed over time. Each number is plotted on the graph with a dot. The dots are then connected to form a line, which clearly shows where numbers have increased and decreased.

You can also plot other lines in different colors to add more information to the graph. For example, you could have a black line for the number of women elected to Congress, a blue line for the number of Democrats elected, and a red line for the number of Republicans.